

**FREE**

**Volume 6 • Issue 18**  
**November 28, 2019**

*Happy*  
**Thanksgiving**



**THE** *Belt* **and**  
**BEYOND**

**A PUBLICATION FEATURING: local events, news, happenings and more**

**CONTENTS**

**WEEKEND HAPPENINGS** 2  
**UPCOMING EVENTS** 3  
**COMMUNITY NEWS** 4, 5, & 12  
**HOLIDAY HAPPENINGS** 6 & 7  
**SMALL BUSINESS SATURDAY** 8 & 9  
**THANKSGIVING ADS** 10 & 11  
**DINING** 13  
**YOUNG AT HEART** 14  
**CLASSIFIED/BUSINESS CARD DIRECTORY** 15  
**MT BETHEL FIRE CO./** 16  
**SLATE BELT RISING-SLATE BELT CHAMBER**

**WEEKEND HAPPENINGS**

**Model Train Show**

Nazareth Area Society of Model Engineers

November 29 - 7pm-9pm  
 November 30 - 1pm-5pm  
 December 1, 7, 8, 14, and 15 - 1pm-5pm  
 December 27 - 7pm-9pm  
 December 28 and 29 - 1pm-5pm  
 January 3, 2020 - 7pm-9pm  
 January 4 and 5, 2020 - 1pm-5pm



212 Main Street,  
 Stockertown, Pa  
 Parking behind Municipal  
 Borough Hall

Donations Welcome

**MT BETHEL FIRE CO. LADIES AUX.  
 31ST ANNUAL FALL CRAFT SHOW**

Saturday, November 30th, 9:00am-3:00pm 2342 N.  
 Delaware Drive, Mt Bethel, PA. 18343

**LUKE HAHN FOUNDATION NIGHT OF LIGHT**

Saturday, November 30th, 7:00pm. Grace United  
 Methodist Church, 404 Mountain Ave. Pen Argyl, PA.  
 See ad on page 3.

**TOYS FOR TOTS - A SLATE BELT TRADITION**

The holidays are just around the corner and that means it's time for the Annual Toys for Tots Toy Drive Event hosted by Portland Lodge No. 311 F&AM. The event will be held at Charter's Banquet Facility at Plainfield Township Fire Co., 6480 Sullivan Trail in Wind Gap, PA., **Sunday, December 1st from 1:00pm-4:00pm.** See page 5 for event details

**FORKS OF THE DELAWARE BOTTLE COLLECTORS ASSOC.**

46th Annual Bottle & Antique Show & Sale **Sunday, December 1st, 9:00am-2:00pm.** Bethlehem Catholic High School 2133 Madison Ave. Bethlehem, PA 18017. For info: Bill Hegedus 610-264-3130.

**NOVEMBER/DECEMBER**

**NATIONAL DAYS**

**NOVEMBER NATIONAL DAYS**

NOVEMBER 28 - THANKSGIVING  
 NOVEMBER 29 - BLACK FRIDAY  
 NOVEMBER 30 - SMALL BUSINESS SATURDAY

**DECEMBER NATIONAL DAYS**

DECEMBER 1 - NATIONAL PIE DAY  
 DECEMBER 2 - CYBER MONDAY  
 DECEMBER 3 - NATIONAL DAY OF GIVING  
 DECEMBER 4 - NATIONAL COOKIE DAY  
 DECEMBER 6 - ST. NICHOLAS DAY  
 DECEMBER 7 - NATIONAL PEARL HARBOR REMEMBRANCE DAY  
 DECEMBER 8 - NATIONAL BROWNIE DAY  
 DECEMBER 10 - HUMAN RIGHTS DAY

**CONTACT US:**

thebeltandbeyond@gmail.com  
 P.O. Box 33, Bangor, Pa 18013  
 610.704.6818

Like us on Facebook "The Belt and Beyond"  
 Online at www.thebeltandbeyond.com

**Publisher/Editor**

Candy Martin

**Account Executive**

Kaitlyn E. Martin

kemartin.thebeltandbeyond@gmail.com

**Account Executive**

Sarah Loren

SJLoren.TheBeltAndBeyond@gmail.com

**Graphic Design**

Stacey Fogel

**Feature Writer**

Sarah Janelle Loren

**Contributing Writer**

Kathleen J. McFall

**Contributing Photographers**

Kris Ordinsky-Parks, Lynn Cistone,

Stacey Fogel

**Photographers**

Nick Pulsinelli, Lisa Newberry, Lou Freeman

Next issue will be printed **December 12th**  
 Deadline for all ad copy and news  
**Friday, December 6th at 5pm**  
 Email your news and events to  
**thebeltandbeyond@gmail.com**

**EBUMCC PASTIE SALE**

East Bangor United Methodist Community Church pastie sale. Selections include beef w/wo onions and broccoli-cheese w/wo onions. To order, call Lois at 610-588-1745 by **Sun. Dec. 1st**. Pastie pick up at the church on **Tues. Dec. 3rd, at 3:30 p.m.** Church is located at 136 W. Central Ave. (Rt. 512), East Bangor

**CHRISTMAS ON THE CORNER IN PEN ARGYL**

Christmas on the Corner, Tuesday, December 3rd, 6:30pm. Pen Argyl Borough Hall, 11 N. Robinson Avenue, Pen Argyl. Features include carols led by Miss Rose's Preschool children 6:45 pm: Lighting of the official Borough Christmas Tree 6:50 pm: A visit from Santa Claus. Cookies, milk, and hot chocolate will be served. Event sponsored by the Pen Argyl Women's Club and Borough Council.

**JACOBSBURG ENVIRONMENTAL EDUCATION CENTER COMMUNITY PROGRAMS, DECEMBER****Family Night: Crafting for the Holidays**

**Friday, December 6 at 6:30pm-7:30pm**

Try a variety of craft projects that use the three R's, Reduce, Reuse, and Recycle. The holidays can be an overwhelming time of resource consumption. Take a break with us as we learn to make beautiful gifts and decorations from reused and recycled resources. If you're in the mood for gift giving you can bring along paper towel tubes, egg cartons, soda bottles, and unwanted catalogs to share. You will go home with your own creations to help brighten your home as we near the longest night of the year! This program is best for ages 5 and up. **Registration is required.**

**Environmental Club: Aquatics Night**

**Wednesday, December 11 at 6:30pm to 8:00pm**

Looking to expand your knowledge of Environmental Science? Interested in competing in Envirothon? Join other teens 13-18 from our area once a month at Jacobsburg to learn the concepts and content that you need to be competitive, not just in Envirothon, but in an environmental career. Natural resource professionals will assist in presenting each topic, assisted by teens who are familiar with Envirothon and resource conservation. The first session will explore the topic of aquatic ecology with local Waterways Conservation Officer Zachary Rudd. Investigate organisms that live in water and the issues affecting water quality. Adult advisors must be accompanied by a teen in order to attend. **Registration is required**


You can also view and register for community programs online at <http://events.dcnr.pa.gov/>. If you need an accommodation to participate in a program please contact the park office at 610-746-2801 or [jacobsburgsp@pa.gov](mailto:jacobsburgsp@pa.gov). With at least three days notice, interpreters for people who are.

**FRIENDS OF BANGOR PUBLIC LIBRARY TO HOST BREAKFAST WITH SANTA**

**Saturday, December 7th from 9:00am-12:00pm**, at the Bee Hive Community Center, 197 Pennsylvania Avenue, Bangor, PA. There will be a Pancake Breakfast, visit with Santa and more! All attendees (Children and Adults) will receive a book as a gift from Santa. Tickets will be available at the door. All proceeds benefit the Bangor Public Library.

**FAMILIES FIRST HOLIDAY BAZAAR ARTS & CRAFTS SHOW**


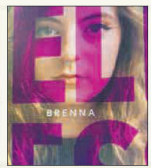
**Saturday, December 7th, 9:00am-2:00pm**, Wind Gap Middle School Gym, 1620 Teels Road, Pen Argyl, PA

 THE LUKE WILLIAM HAHN FOUNDATION PRESENTS:  
*Night of Light*

Please join us as we remember those we have lost with a ceremonial candle lighting, inspirational speakers and heartwarming music. This non-denominational event is open to children and adults of all ages, and there is no cost to attend.

This year we have two amazing guests - Congresswoman Susan Wild and singer Brenna Grealish. Congresswoman Wild will be attending to speak about her loss experience and the ways in which she is finding peace. Brenna Grealish will be singing two of her beautiful original songs for everyone.

**NOVEMBER 30, 2019  
7PM - GRACE UNITED  
METHODIST CHURCH  
PEN ARGYL**

Please join us  
on **December 8th**  
**FOR A DOUBLE EVENT**



**VFW Post 739**  
**202 Washington Blvd., Bangor, Pa 18013**

**ALL YOU CAN EAT LUNCH BUFFET FUNDRAISER:**  
PROCEEDS BENEFIT MATTHEW ALBERT'S EAGLE SCOUT SERVICE PROJECT

**Time: 11:00am-3:00pm**  
**Donation: Adults \$10.00 Children Under 10: \$5.00**

**Hamburger Bar-B-Que - Hot Dogs - Mac and Cheese  
Chicken Dip - Chips - Pretzels - Desserts & Drinks**

**MATTHEW ALBERT'S EAGLE SCOUT SERVICE PROJECT:**  
**FLAG RETIREMENT CEREMONY AND DEDICATION**  
**Starts promptly at 1:00pm in the grove**

Todd W. Smith  Barbara A Smith

**ABA** INSURANCE NOTARY & TAG  
204 NORTH MAIN STREET, BANGOR, PA 18013  
All types of insurance • Notary  
610-588-3030 / 610-588-6552  
FAX: 610-588-4115  
EMAIL: [ABAINSURANCE@RCN.COM](mailto:ABAINSURANCE@RCN.COM)

**MT BETHEL VOL. FIRE CO LADIES AUX. MONTHLY SOUP NITE**

The Mt. Bethel Vol. Fire Co. Ladies Auxiliary will host their "Monthly Soup Nite" on **Thursday, December 12th, 3:00pm-7:00pm** at the Mt Bethel Vol. Fire Co., 2341 N. Delaware Drive, Mt Bethel, PA. Eat in or take out available by the bowl or quart. Soup night will be held the second Thursday of every month through March 2020.



**Bangor Area High School Winter Band and Choir Concerts**  
**Bangor Area High School Choir Winter Concert - December 11th, 7:30pm**, 123 Five Points Richmond Rd., Bangor, PA  
**Bangor Area High School Band Winter Concert - December 13th, 7:30pm**, M. Craig Paine Performing Arts Theater, 123 Five Points Richmond Rd., Bangor, PA

**NOW OPEN**  
**MT. BETHEL PHARMACY**

2165 Mt Bethel Highway ( Mt Bethel Plaza), Mt. Bethel, PA  
**570-583-2027**

**FREE RX Pick Up & Delivery**  
**FREE Bubble Packs**

**Hours: Monday-Thursday 8:00am-6:00pm; Friday 8:00am-5:00pm**

**Other Convenient Locations:**

**Wind Gap Community Pharmacy**  
 31 W. 1st Street, Wind Gap, PA  
 610-881-4260

**Pocono Community Pharmacy**  
 1656 Rt. 209, Unit 6 Brodheadsville, PA 570-801-7886  
 (located opposite to Pleasant Valley High School)

**Pocono Community Pharmacy II**  
 175 E. Brown Street, Suite 107 E. Stroudsburg, PA.  
 570-664-8226  
 (located opposite to Lehigh Valley PMC ER)

**The Great Slate Belt Trivia Contest**

The Slate Belt Heritage Center will hold its annual "Great Slate Belt Trivia Contest" on **Sunday, December 8th at 2:00pm**. Come alone or bring a team of four and test your knowledge of the history of the entire Slate Belt, from Portland to Wind Gap, Roseto, Bangor, Pen Argyl, and all surrounding townships. Prizes will be awarded to the winning team. A lot of fun and laughter for the entire family and friends with MC, Marc (Alex Trebek) Blau. The event is free and open to the public. The Center is located at 30 North 1st Street, Bangor, PA. For additional information please contact: Karen Brewer at 484-894-5661.

**100th Anniversary of Weona Park 2020 Limited-Edition Calendar**

The 100th Anniversary of Weona Park 2020 Limited-Edition Calendar is now available for purchase. The calendar, put together by Mr. Walter Cole, former History teacher at Pen Argyl High School and member of the Slate Belt Heritage Center, features pictures, past and present, of the park and events that took place there. The Calendar is on display at the Blue Mt. Community Library, 216 S. Robinson Ave., Pen Argyl. To purchase or for more info, call Walt Cole at 610-863-6472.

**Immaculate Conception School Receives \$9000 from Merchants Bank**

Immaculate Conception School received a \$9000 donation from Merchants Bank, supporting The Eastern Pennsylvania Scholarship Foundation (EPSF) and the Blue and White Scholarship Foundation both of which follow the guidelines of Pennsylvania's Educational Improvement Tax Credit (EITC).

Each foundation assists in providing scholarships and tuition assistance to deserving Catholic school students. Specifically, Blue and White Scholastic Foundation is a nonprofit focused on scholarships, student financial aid services, and awards.

"Merchants Bank has been a tremendous supporter of our school. We are honored to be among the awardees the bank has chosen, says Sister Maria Luz, O.P., Principal at Immaculate Conception School. The funds go to support the scholarship program enabling children of deserving families with an enriched experience in the Catholic school family, adds Sister Luz.

"We have had a long-standing relationship with Immaculate Conception. The school and its community are blessed to have Sister Maria's devotion. She gives unyielding support to the children, the school, and its program. We believe that the strength of our community rests in fostering its children, the foundation of the future", says Rocco Del Vecchio, CEO, Merchants Bank.

**DEPENDABLE and KNOWLEDGEABLE agent seeks customers looking for real PROTECTION and long term RELATIONSHIP.**

**Look no Further**

Having one special person for your car, home and life insurance lets you get down to business with the rest of your life. It's what I do.

**GET TO A BETTER STATE™. CALL ME TODAY.**  
**610-881-4433**

**State Farm™**

State Farm Mutual Automobile Insurance Company, State Farm Indemnity Company, State Farm Fire and Casualty Company, 1101201.1, State Farm General Insurance Company, Bloomington, IL

**Debbie Pettinari, Agent**  
 106 S Broadway  
 Wind Gap, PA 18091  
 debbie.pettinari.wz73@statefarm.com

**Families United Network, Inc.**

**Foster & Kinship Care**  
**SWAN-State Wide Adoption Network**

For more information on how You can make a difference in the life of a child, please call:  
**570-340-1444**  
 or visit our website at: [www.families4kids.org](http://www.families4kids.org)

Families United Network, Inc. does not discriminate in regards to race, color, religious creed, disability, ancestry, national origin, age or sex.



**Pictured L-R Rocco Del Vecchio, Louise Communale, Sister Maria Luz, and David Ceraul with school students.**



**Book Signings by Local Author Jolynn Angelini to Introduce her Novel "The Protectors."**



The first will be held on **Saturday, November 30th from 1:00pm to 3:00pm**, hosted by the Moravian Book Store, 428 Main St., Bethlehem, PA 18018. The second will be held on **Sunday, December 15 from 12:00pm to 2:00pm** hosted by Barnes and Noble, Southmont Plaza at 4445 Southmont Way, Easton, PA 18045 On **Saturday, December 28th from 2:00pm to 5:00pm** she will have another signing at Barnes and Noble at the Promenade Shops, 2960 Center Valley Parkway, Center Valley, PA, 18034 Books will be available for purchase.

**Donna's Salon and Advanced Reiki Healing 4th Annual Community Collection for Women's Resources of Monroe County, Inc.**

Donna's Salon and Advanced Reiki Healing will be collecting personal hygiene items (shampoo, conditioner, toothbrushes, tooth paste, soap, body wash and personal items) to be donated to Women's Resources of Monroe County, Inc. located in Delaware Water Gap

Women's Resources provides services to all victims in our community, regardless of gender, age, race, sexual orientation, or religion <http://www.wrmonroe.org>

Each year Donna's clients and the Slate Belt community have been very generous in this season of giving with donations. This year Donna hopes to make the biggest contribution yet! Donna's Salon and Advanced Reiki Healing is located at 201 W. Main Street, Pen Argyl, PA. 18072, 484-809-3727. Hours are: Monday-Thursday 10:00 am - 6:00 pm; Friday 9:00 am - 4:00 pm; Saturday by appt.

**Toys for Tots Community Toy Drive**

The holidays are just around the corner and that means it's time for the Annual Toys for Tots Community Toy Drive Event hosted by Portland Lodge No. 311 F&AM. This year's event will be held at Charter's Banquet Facility at Plainfield Township Fire Company, located at 6480 Sullivan Trail in Wind Gap, PA on **Sunday, December 1st from 1:00pm to 4:00pm**. With the donation of a new, unwrapped toy for a child 0-12 years old, we invite you to join us for a magical afternoon as we help our U.S. Marines deliver Christmas to children in need throughout Northampton County. The U.S. Marines & Chesty, the Marine Bulldog Mascot will be escorted to the event by local police & volunteer fire companies. Welcome the true heroes of Christmas, the U.S. Marines, to the event and thank them for their service with a United States Flag. There will be FREE 4x6 photos with Santa in the Rockin' Photobooth. The Mav oya'la Clan Costume Club will join us so that you can meet & greet your favorite characters from the Star Wars Saga. Enjoy Christmas Music by Dice Productionz, an interactive Lionel Train Display and live reptiles. Children can enjoy a variety of activities presented by Girl Scout Troops, Waste Management, Ignite Fitness, Bangor Daycare, Just Dance Dance Studio, Slate Belt YMCA. In addition, there will be Gifts from Santa, Vendors & MORE!

**MT. BETHEL VOL. FIRE COMPANY PRESENTS:**

# THE LARGE FLOWERHEADS

**Come and groove to the 60's on FEB. 22<sup>ND</sup>**

WITH A SNOW DAY OF FEBRUARY 29  
DOORS OPEN AT 6PM  
BAND PLAYS FROM 7PM TO 10PM

**\$15 IN ADVANCE \$20 AT THE DOOR!**

**DON'T WAIT! TICKETS WILL GO FAST!**

THE PRICE OF THE TICKET ONLY COVERS COST OF THE SHOW. FOOD CAN BE PURCHASED FROM THE KITCHEN WHILE A CASH BAR FOR ALCOHOLIC AND NONALCOHOLIC DRINKS WILL BE AVAILABLE AS WELL.  
**NO OUTSIDE FOOD, ALCOHOL OR BEVERAGES ARE ALLOWED.**  
FOR MORE INFORMATION CONTACT DALE HANDELONG AT 570-688-8268

**Some things just belong together**

**Save when you insure your home and auto with ERIE.**

You can have superb insurance coverage, outstanding service, great rates and discounts too. Take advantage of ERIE's multi-policy discount and we're willing to bet your tail will be waggin'. Also ask us about ERIE's other available discounts. Call us for a quote today.

**Robin Tinsley Sabatino Insurance Agency Inc**  
17 S Robinson Ave  
Pen Argyl, PA 18072-1765  
ROBIN@SABATINOINS.COM  
610-863-6033

**Erie Insurance**  
Above all in sERVICE™ since 1925  
Auto • Home • Business • Life

**Find out what's going on in your community in The Belt and Beyond available in print and online [www.thebeltandbeyond.com](http://www.thebeltandbeyond.com)**



**All You Can Eat Pancake & Sausage Breakfast**  
 Join Santa Claus and Washington Township Fire Co.  
 for an All You Can Eat



**Pancake & Sausage Breakfast**  
**Sunday, December 8th,**  
**8:30am to 11:30am**

Tickets \$7 at the door  
 Ages 3 and under are free  
**Christmas Gift Tricky Tray**

Photos with Santa available to purchase  
 Todd LaBar Photography will be on site to take  
 pictures, affordable packages available.

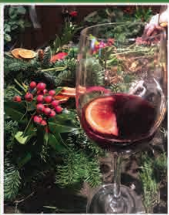


**Clear Spring Farm LLC**

Dates still available for Wine and Wreath Parties.  
 Call to book your party today!  
 Black Friday-Christmas Trees, Wreaths,  
 Cemetery Pieces

Reserve Now for  
 Christmas Centerpiece Workshop  
 Weekend of December 20th, 21st, & 22nd Only.  
 Limited space, reserve your seat now.

Visit [clearspringfarm.net](http://clearspringfarm.net) or our  
 facebook page: Clear Spring Farm  
 or call 610-258-5050.



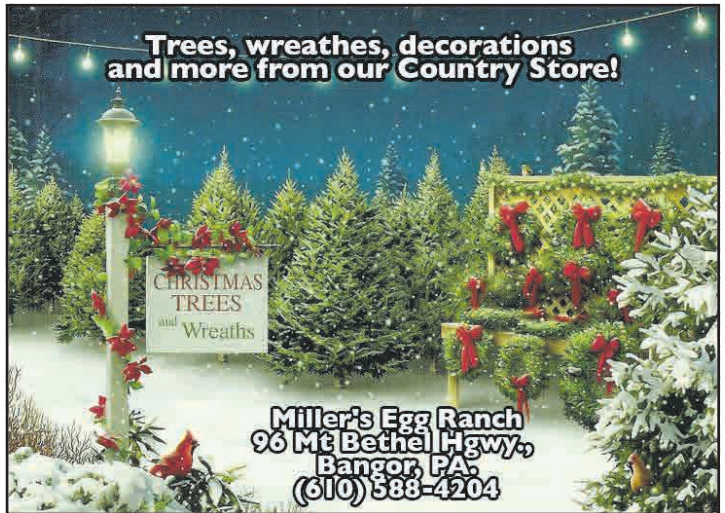
Kids,  
 Youth Groups  
 & Scout Groups  
 Wreath Parties

Call for more info

206 Garr Road, Easton, PA. 18040 · Hours 10:00am-6:00pm

**Community Christmas Cantata**

The Slate Belt Community Choir will hold their Christmas Cantata at Grace United Methodist Church, 404 E. Mountain Avenue, Pen Argyl on **Sunday, December 15th at 3:00pm** in the sanctuary. The cantata features members from many churches in the Slate Belt area. A free-will offering will be taken to benefit the Food Bank at Hope UCC in Wind Gap.



Miller's Egg Ranch  
 96 Mt Bethel Hwy.,  
 Bangor, PA.  
 (610) 588-4204

*Jacobsville Historical Society Presents*

**Christmas at Boulton**

*A Very Special Christmas Experience*

**SAT., DECEMBER 14TH, 11AM-4PM**

**SUN., DECEMBER 15TH, 12PM-4PM**

Featuring the 1832 J. Joseph Henry House adorned in beautiful Victorian Christmas décor. Exquisite historic Henry Family fashion display; many outfits have been in storage for more than 100 years!

THE J. JOSEPH HENRY HOUSE, SUMMER KITCHEN, NICHOLAS HAWK GUN SHOP, EARLY AMERICAN CRAFT CENTER, CARRIAGE & SLEIGH DISPLAYS, THE "NEW" BLACKSMITH SHOP DISPLAY, THE PENNSYLVANIA LONGRIFLE MUSEUM AND OUR GIFT SHOP WILL BE OPEN DURING THIS SPECIAL EVENT!

*Enjoy refreshments in our Early American Craft Center including our famous Jacobsville Brew!*

Adults - \$10

Children 12 & under - FREE, JHS members, Active Duty Military & Scouts in Uniform - FREE

Boulton Historic Site & Jacobsville Historical Society  
 402-403 Henry Road near Nazareth PA, just off the Belfast Exit of Rt 33

[WWW.JACOBSBURGHISTORY.COM](http://WWW.JACOBSBURGHISTORY.COM)

**QUIET VALLEY**  
 LIVING HISTORICAL FARM  
 STROUDSBURG PA

**29th Annual Old Time Christmas**

Saturdays & Sundays

**December 7, 8 & December 14, 15**

Adults \$10 Ages 3-12 \$5

Guides dressed in period clothing lead you by lantern light on a visit to an 1800s Christmas.

Storytelling, Caroling, Christmas Putz, Live Nativity, Belschnikel Visit, Gift Shop & more!



[WWW.QUIETVALLEY.ORG](http://WWW.QUIETVALLEY.ORG) 570-992-6161

**f Like us on Facebook**



**Baarda Farms**  
**Holiday Open House**  
**Saturday & Sunday, December 7th & 8th,**  
**9:00am-5:00pm**  
**Seasonal Decor, Gift Ideas, and More!**  
 1566 RIVER RD., MT. BETHEL · OPEN 7 DAYS 9AM-5PM · 570.897.0135

*Witness*  
 MUSICAL GOSPEL GROUP

*You are Invited*  
**Saturday Evening,**  
**November 30th,**  
**7:00 pm**  
 at  
**First UEC Church**  
**25 S. 2nd St.**  
**Bangor**

**A Country Home**  
 Country Primitive Home Decor & More  
**Happy Thanksgiving**  
**Christmas Decor, Small Decorated Trees, Snowmen.**  
**Great gift & stocking stuffer ideas. Gift Certificates**  
**Opening at 10:00am on Black Friday**  
**Small Business Saturday is November 30th**  
**Remember to Shop Local!**  
**Hours: Thursday, Friday, Saturday 10:00am-5:00pm**  
**Sunday 12:00pm-4:00pm**  
 201 Center Street, Stockertown, PA  
 610-759-4744  
 Directions: Turn at the Widow's Tavern & Grill, Go 1 block and turn right

**Thomas Greenhouse & Country Store**  
 Shop local at a family owned business  
 484-661-6553  
**OPEN FOR THE HOLIDAY SEASON**  
 Open 7 Days a week until Christmas Eve  
 Christmas Eve open until 1:00 pm  
*Beautiful handmade wreaths, centerpieces, grave blankets, Christmas boxes & Christmas Country Decor*  
**WREATHS STARTING AT \$12**  
**Now accepting orders for Fresh flower centerpieces**  
**1602 MOUNT BETHEL HWY. (RT 512) MT BETHEL, PA.**

**TUSCARORA**  
 INN & CONFERENCE CENTER  
**Free events this Christmas season!**  
*The Ball Brothers*  
 Friday Night Concert  
 December 13, 2019  
 7:30pm  
*Christmas Market*  
 Saturday, December 14, 2019  
 10:30 am - 2:30 pm  
 Shop local craft vendors at the Olsen Activity Center!  
 TUSCARORA INN & CONFERENCE CENTER  
 TUSCARORA.ORG | (570) 897 - 6000

*Christmas Tree Lightings*

- Stroudsburg** - Friday, November 29th, 5:00-7:00pm, Courthouse Square Downtown Stroudsburg
- Easton Peace Candle Lighting** - Saturday, November 30th, 10am to 8pm [www.eastonmainstreet.org/peacecandlelighting](http://www.eastonmainstreet.org/peacecandlelighting)
- Wind Gap** - Sunday, December 1st, 2:00pm-4:00pm, Wind Gap Fire Co. Social Hall, 111 N. Broadway, Wind Gap
- Portland** - Sunday, December 1st, 6:00pm
- Roseto** - December 1st, 6:00pm, Roseto Municipal Building, 164 Garibaldi Ave, Roseto, PA.
- Tatamy Historical Society** - Annual Christmas Tree Lighting, December 1st, 6:30 pm at the Municipal Building. Carol sing & visit from Santa
- Pen Argyl** - Tuesday, December 3rd, 6:30pm, Pen Argyl Borough Hall
- A Mt. Bethel Christmas** - Wednesday, December 4th, 5:00-6:00pm, Mt Bethel Vol Fire Co. Hall, 2341 N Delaware Dr., Mt Bethel, PA
- Nazareth** - Thursday, December 5th, 7:00pm, in the circle Downtown Nazareth
- Lower Mt Bethel Twp.** - Saturday, Dec 7th, 6:00-7:30pm, Lower Mt. Bethel Municipal Building
- Bangor** - Saturday, December 7th, 6:00pm Hosted by Family Life Community Church and The HUB Downtown Bangor (at the monument) (Rain Date) Sunday, December 8th, 6:00pm
- East Bangor Community Tree Lighting** - East Bangor Park. Friday, December 13th. Band and carols at 7:00 pm, Santa at 7:30pm. Cookies and cocoa
- East Bangor Fire Company Tree Lighting** - Saturday, Dec 14th. Crafts at 6:00 pm, Santa at 7:00 pm Hot Chocolate and Cookies.



# Small Business Saturday

## November 30th



### MILLER HOUSE 18TH ANNUAL HOLIDAY CRAFT SHOW

Everything you need for the holidays by local crafters

Friday, November 29th, 4:00pm-8:00pm  
Saturday, November 30th, 10:00am-4:00pm  
Sunday, November Dec. 1st, 12:00pm-4:00pm

12 E. HIGH STREET, BANGOR, PA  
(ACROSS FROM MILLER'S PAINT STORE)



### Enter our Raffle to Win 4 tickets to the Crayola Experience

(courtesy of WSBG 93.5)  
tickets valid thru May 2020.  
To enter, stop in and bring a non-perishable food item appropriate for Thanksgiving. Winner will be announced on Nov. 21st.

Donations will be given to Slater Family Network.

### LITTLE CREEK BAR-B-CUE

610-588-3831

1004 Washington Blvd.,  
Bangor, Pa

Remember to Shop  
Local & Support Local  
Small Business  
Saturday November 30th  
Keep the Unity in  
Community!

[www.littlecreekbarbecue.com](http://www.littlecreekbarbecue.com)



### Help us make a local child's Christmas Special

Since 2013 we've partnered with Slater Family Network & Families First to help make a child's Christmas a little brighter. Stop in and pick a star from our Giving Tree and follow the instructions on the back.

### GreenLeaf Soft Tissue Therapy 610-452-9021

Visit Greenleaf Soft Tissue Therapy on 11/30 from 10am-4pm to receive 20% OFF Holiday Gift Cards and Enter to WIN our Gift Basket! We will have complimentary Hot Apple Cider for your refreshment.

Additional artisans in this space:  
Art by Sabatini, Sue Lurie Creations,  
Heinsohn Farms, Tricia's Handmade Gnomes  
Please contact [GreenleafSTT@gmail.com](mailto:GreenleafSTT@gmail.com) or 610-452-9021 if you are interested in joining us for the day!

32 Market Street, Bangor, PA.



### Red Lotus Yoga & Healing (610) 590-5323

Visit Red Lotus Yoga & Healing on 11/30 from 10am-4pm to receive 20% OFF all class cards, memberships, and services. Enter to WIN our Gift Basket! We will have complimentary Hot Tea for your refreshment.

Additional artisans in this space:  
Scentsy by Cara, Mermaid Bath Co.  
Please contact at [info@redlotusheals.com](mailto:info@redlotusheals.com) or 610-590-5323 if you are interested in joining us for the day!

20-22 Broadway, Bangor, Pa

2019



\$20  
Haircuts

\$19

Pedicures

Get these holiday savings while they last!  
Appointments Necessary for Specials.

### JMS Salon & Spa

610 588 6813

436 S. First Street  
Bangor, PA

### CUTS PLUS

610-599-6214

Senior Perms \$43  
Call for your  
holiday appointments

Gift Certificates available for  
Holiday Gift Giving

531 S. MAIN STREET, BANGOR, PA.



### EMPIRE'S COFFEE 610-452-9164

Homemade Empanadas  
Beef or Chicken  
Available Every Day

Breakfast Sandwiches - Homemade  
Soups & Chili, Sandwiches, Salads,  
Desserts & Pastries!

Hours: 9:00am-7:00pm Monday-Saturday

44 Broadway, Bangor, PA



### Three Brother's Beverage, Inc 610-588-BEER (2337)

6 packs & 12 packs,  
Lottery Tickets & Gift Certificates

Open Thanksgiving Day  
9am-12pm

SHOP LOCAL &  
SUPPORT LOCAL BUSINESS

367 Blue Valley Drive, Bangor, Pa



Shop Local Dine Local  
Spend Local Support Small Business!



# Small Business Saturday November 30th



**Infinity Baskets & Gifts**  
484-553-2027  
www.infinitybaskets.net

**Custom handmade gifts for all of your holiday shopping**

Personalized Lamps, Lanterns, Glassware, Wooden Signs, T-Shirts, Sweatshirts & more!

Gift Certificates also available

**Expressions Thru Glass**  
Celebrating 25 Years  
Black Friday & Small Business Saturday deals throughout the weekend  
See store for details

Open everyday until Christmas Eve beginning Black Friday

Monday - Saturday 10am-5pm / Sunday 10am-3pm  
610-588-1490  
2242 Ridge Rd., Bangor, Pa 18013  
Only 15 minutes from NJ bridges!  
www.expressionthruglass.com

**MILLER'S EGG RANCH**  
610-588-4204 **New Christmas Decor**

**Small Business Saturday Specials**

**\$5 Jams/Sauces/Salsas Meat Specials**

Stay Tuned for Photos with our Santa Pony!

HOURS: MON-FRI 7:30AM-5PM  
SAT 8AM-3PM CLOSED SUNDAY

96 MT. BETHEL HIGHWAY, BANGOR, PA.

**Donna's Salon and Advanced Reiki Healing**

Holiday appointments are going FAST!  
Book now to guarantee your Hair or Reiki Holiday appointments!

DONT FORGET!  
GIFT CARDS MAKE EXCELLENT GIFTS!!  
484-809-3727  
201 W. MAIN ST., PEN ARGYL PA.

**SWEET NANNY'S CANDIES & ICE CREAM CREAMERY**

**Small Business Saturday Special**  
Buy 1 Get 1 FREE Sundaes (Soft serve only)  
Offer valid November 30th ONLY

Now taking holiday orders for Frozen Ice Cream Cupcakes, Cakes, Ice Cream Sandwiches, & Candy Baskets.

Holiday orders deadline: December 20th  
Orders must be picked up by December 23rd  
101 South Broadway, Wind Gap, PA.  
(484) 538-6571

Come Shop Our Holiday Open House on Saturday & Sunday!  
Shop Local On Small Business Saturday!

Enjoy 10-30% off Storewide 11/30 & 12/1

No exclusions! Enjoy savings on our holiday decor, soy candles, unique gifts, all natural soaps, antique & vintage items as well as refinished furniture.

15% off Wise Owl Paint Company, Dixie Belle Paint Company and Cling On Brushes!

Refreshments and homemade baked goods while you shop!  
Drawing for a \$50 Gift Certificate to All Aspects Restored & Recycled!

Thanksgiving Weekend Open House Hours:  
Saturday, November 30th: 9am-5pm  
Sunday, December 1st: 11am-4pm  
1086 S Delaware Dr in Mount Bethel, PA (across from Twin Gap Farms on Rt. 611)

**State Farm**  
Brian Witmer, Agent  
State Farm Insurance

745 Market Street,  
Bangor Pa. 18013  
610-599-5050

Serving The Slate Belt Since 2004

**Wagner Tire & Auto Service Inc**  
Family-Owned & Operated for over 75 Years!

ASE CERTIFIED

508 Locke Heights Rd  
Bangor, PA 18013  
610-588-1852

Monday-Friday 8:00am-5:00pm  
wagnersmj1967@aol.com

**Dunkelberger's Sports Outfitter**  
EXPERIENCE OUR EXPERTS!

**EVERYTHING YOU NEED FOR HUNTING - FISHING ARCHERY - CAMPING and MORE!**

• Stroudsburg •  
• Brodheadsville •  
DUNKELBERGERS.COM



'Tis the Season to Shop Local  
Support Small Business!

## The Gift of Hope

By Kathleen McFall

Thanksgiving is a time to pause and give thanks, to focus on the positive and celebrate the season - a time to acknowledge all the blessings in our lives.

We live in a country where we are free to come together with family and friends, enjoy a holiday dinner in our homes and worship and gather in a place of our choosing.

While I welcome all these traditional holiday celebrations and reflections, I recognize it is important to give thanks not just during a season, but for all life's seasons and gifts.

One of the deepest gifts I am grateful for is the gift of hope.

We can view hope in a secular way - on the most basic level, the desire for something good in the future. When seen in this manner, our expression of hope is also an expression of uncertainty. The knowledge that we are "hoping" something will happen, but just aren't sure it will.

However, the biblical gift of Hope is one of our greatest gifts. Biblical hope not only desires something good for the future - it expects it to happen and is confident it will happen. There is no uncertainty.

It is impossible to travel the journey of life and not encounter hardships which can lead to self-pity or self-justification. Setbacks are a natural part of life - the loss of a job, a loved one, an unexpected sickness, plans that didn't turn out the way we expected.

Often we focus on the distractions which are depriving us of times that can be memorable and that we can never recover.

During these unsettling periods of life, I look to the biblical inspiration of hope for the strength to keep going and not give up. Divine hope can do wonders. It can change minds, restore lives and relationships, bring us peace and contentment despite the turmoil that surrounds us.

I also look for support in my relationships with family and friends. However, most importantly, rather than let the trials in life strip me of joy and fill me with despair, I look to God with gratitude and I reflect not on what is going wrong but gaze at the beauty around me.

Nature is uplifting. For those of us in the Northeast, autumn brings such spectacular colors and winter's snow blankets our homes and streets with whiteness and serenity. The circle of life is captivating and compelling. In each stage of life - newborns, children, teens, young or mature adults, God gives us incredible beauty.

Take time to give thanks and stand in awe at God's breathtaking gifts and testimony of His love for us. His beauty surrounds us. Hope overflows, and we can trust in the power of hope.

Do not doubt God's goodness and plans for your life, nor the hope He brings for your future. My joy, my peace and my thanksgiving are found in God. I believe He calls us to place our hope in Him.

God is gracious. Each of us has a story. We wait in biblical hope for employment, for test results, for our finances to improve, our health to be restored, our marriage to be refreshed.

Through all life's ups and downs, I've seen the love and grace of God in my life. Being a mother and a grandmother is a gift that I cherish daily. Solomon wrote in Ecclesiastes that the best thing we can do is have fun, enjoy life and joy will accompany us throughout our lives. (Eccl. 8:15)

It is important to be thankful. This Thanksgiving, I will celebrate the day, grateful for my family, friends and a life filled with the gift of hope. God wants us to place our hope in Him and desires an abundant life for each of us.

The Bible states in Jeremiah 29:11, "For I know the plans I have for you, plans to prosper you and not to harm you, plans to give you hope and a future."

Please join me and enjoy the gift of divine hope, even during the uncertain times in life.

## Happy Thanksgiving.

### The Gathering

by Robert L. Martin

*After the fences building  
And the soil and the tilling  
And the furrows sowing  
And the saplings growing  
And the vigilant nurturing  
And the north wind whirling  
And Mother Nature's warning  
'Tis time for the harvest*

*We gather at the table  
With the fruits of our labor  
With family and friends  
And all that heaven sends  
Unto God we say grace  
For he can hear at this place  
As we gather to commune  
With our friends in this room*

*Happy Holidays to all  
And to those great and small*



**Realty  
Solutions of PA**  
610-452-2722

**Realty Solutions of PA**

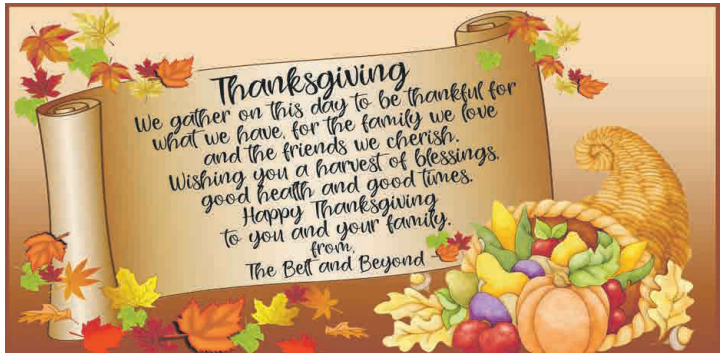
1597 S. Delaware Drive  
Mt. Bethel Pa 18343  
610-452-2722

Faith Sarisky/Broker Owner



*Happy Thanksgiving  
from our family to your family*

During this holiday season let us all remember those who are less fortunate. There are so many ways we can help make the holidays a little brighter for someone. Please consider donating to area food banks or shelters, volunteer your time, donate warm winter clothing or blankets, or make a donation of a new toy. The greatest blessing is to be a blessing.





*Happy Thanksgiving From These Businesses  
During This Season of Thanksgiving We Pause to Count Our  
Blessings for All of The Things We are Thankful For.  
Our Best Wishes to You and Your Family for a  
Happy Thanksgiving.*



**STATE FARM  
INSURANCE**

Brian Witmer, Agent  
745 Market Street  
Bangor, PA  
610-599-5050

**LITTLE CREEK  
BAR-B-CUE CO.**

1004 Washington Blvd.  
Bangor, PA  
610-588-3831

**BONO  
PIZZA**

105 Broadway,  
Bangor, PA  
610-588-6989

**REIMER  
BROTHERS. INC.**

Pen Argyl, PA  
610-863-4105

**BANGOR  
TIRE & AUTO**

411 S. First Street,  
Bangor, PA  
610-588-8473

**LANE'S  
AUTO REPAIR**

147 OW Road  
Bangor, PA  
610-588-3234

**THE  
WASHINGTON**

920 Washington Blvd.  
Bangor, PA  
610-588-2267

**HARTZELL'S  
AUCTION  
GALLERY INC**

521 Richmond Road  
Bangor, PA  
610-588-5831

**THE  
PALMERI GROUP**

6887 South Delaware Dr.  
Martins Creek, PA  
610-252-0526

**DALE ALBERT'S  
GARAGE**

19 Blue Valley Dr.  
Bangor, PA  
610-588-1902

**HORN'S  
OUTDOOR INC.**

1169 Mt. Bethel Highway  
Mount Bethel, PA  
610-588-6614

**WAGNER  
TIRE & AUTO**

508 Locke Heights Rd  
Bangor, PA  
610-588-1852

**KLINE'S  
AUTO REPAIR**

460 S 1st St.  
Bangor, PA.  
610-588-4140

**REALTY EXECUTIVES**

Michelle L. Rowe, REALTOR  
31 West First Street,  
Wind Gap, PA 18013  
Office (610) 863-8444  
Mobile (484)239-5219



HAPPY  
**Thanksgiving**

MT. BETHEL VOL. FIRE COMPANY FEATURING A  
**MURDER MYSTERY DINNER**

# DEADLY SPIES

**THEME**

**APRIL 4, 2020**

PRICE OF TICKET IS \$35 PER PERSON  
 DOORS OPEN AT 5PM DINNER AT 6PM

**BUFFET DINNER SHOW**

CASH BAR WILL BE AVAILABLE TO PURCHASE  
 NONALCOHOLIC AND ALCOHOLIC DRINKS.  
 THIS IS ADVANCE TICKETS ONLY  
 NO TICKETS AT DOOR!

JOIN IN A NIGHT OF  
 FUN, SUSPENSE & LOTS OF LAUGHS



**OXYMORONS IMPROV**

TO PURCHASE TICKETS, CALL: DALE HANDELONG AT 570 688.9268  
 NO OUTSIDE ALCOHOL OR ANY OTHER TYPE OF BEVERAGE OR OUTSIDE FOOD WILL BE ALLOWED.

### Blue Mountain Community Library News



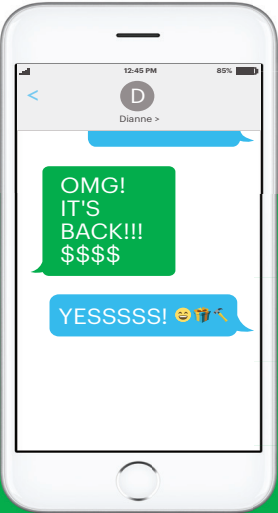
The BMCL's Book Nook is the place for one stop shopping for the reader on your holiday list. Filled with books for gifting, Adult Fiction and Non-Fiction, Children and Young Adult Fiction and Non-Fiction, Large Print and Classics, Puzzles and DVD's. Each month the Library offers a "Book Nook Special." Book Nook Gift Certificates are available.

The Library is located at 216 S. Robinson Ave. in Pen Argyl. Hours: Monday thru Saturday mornings and 6-8, Monday thru Thursday evenings.

Call 610-863-3029 for info. or visit [www.bmcl.org](http://www.bmcl.org) or find us on Facebook at [www.facebook.com/bmclpenargyl](http://www.facebook.com/bmclpenargyl).

### News from State Representative Joe Errick

My office was proud to attend this year's Northampton County 4-H Achievement Banquet. My District Office Manager, Bob Kilbanks, is pictured here alongside my House colleague, Rep. Marcia Hahn, banquet guests and Sen. Mario Scavello.

**Money when you need it.**

You could get a line of credit up to \$1,000\* in about 20 minutes.

Find an office or make an appointment at [hrblock.com](http://hrblock.com).

**No W-2 required  
 Nov. 18 - Jan. 10**

215B South First Street, Bangor, PA 18013  
 Please call for an appointment at 610-588-0011

\* If approved for an H&R Block Emerald Advance®, your credit limit could be between \$350-\$1,000.

H&R Block Emerald Advance® line of credit and H&R Block Emerald Savings® offered through Axos Bank®, Member FDIC. H&R Block Emerald Prepaid Mastercard® issued by Axos Bank pursuant to a license by Mastercard International Incorporated. All products subject to ID verification. Line of credit subject to credit and underwriting approval. Fees apply. Products offered only at participating offices. Promotional period 11/14/2019 - 1/10/2020. Emerald Financial Services, LLC is a registered agent of Axos Bank. Mastercard is a registered trademark, and the circles design is a trademark of Mastercard International Incorporated. Emerald Advance® line of credit is a tax refund-related credit product. Emerald Card® is a tax refund-related deposit product. DBTP# B13898 ©2019 HRB Tax Group, Inc.



## INN TOWN STORAGE

Fall is here!

Time to start thinking about protecting your outside furnishings and storage of vehicles and motorcycles. Come in and check out our low prices and our new specials.

**Wind Gap, Pa**  
 Call for Appointment  
**610-905-3716**

Hours: Monday - Thursday 9:00am-4:00pm  
 Friday 9:00am-12:00pm; Saturday by Appointment

## Charter's Banquet Facility

6480 SULLIVAN TRAIL • WIND GAP, PA

- Small Hall  
UP TO 50 PEOPLE
- Banquet Hall  
UP TO 500 PEOPLE  
ROUND TABLES AVAILABLE
- Outdoor Pavilion  
FOR ANY EVENT

WEDDINGS,  
 BANQUETS, SHOWER,  
 FUNERAL, LUNCHEONS  
 FAMILY REUNIONS,  
 GRADUATION PARTIES

AT PLAINFIELD TOWNSHIP VOLUNTEER FIRE COMPANY

CONTACT INFORMATION: 610-863-7383 • [WWW.PLAINFIELDFIRECO.COM](http://WWW.PLAINFIELDFIRECO.COM)  
 BANQUETFACILITY@PLAINFIELDFIRECO.COM





**LITTLE CREEK**  
**Bar-B-Cue Co.**

1004 Washington Blvd.,  
Bangor, PA 18013  
610-588-3831

Gift Certificates

**Soups On**



See Us for your next Fundraiser!

**Week of Nov. 29 - Dec. 1 Ham & Bean**  
**Week of Dec. 5 - 8 Brunswick Stew or Seafood Chowder**

**Now Taking Holiday Orders**  
**Smoked Ham and Turkey Breast for Christmas**  
**Our Award Winning Q, Cookies and Pies**

Gift certificates make the perfect gift!

**Hours:**

Thursday, Friday & Saturday 11:00am-7:00pm;  
Sunday 12:00pm-6:00pm, Monday-Wednesday Closed

[www.littlecreekbarbcueco.com](http://www.littlecreekbarbcueco.com) Like Us on Facebook



**Giordano's**  
Italian Restaurant  
and Pizza House  
"Our Crust Is A Must"

13 W. Pennsylvania Ave.  
Pen Argyl, Pa 18072  
610-863-7109 · 610-863-9554



**Catering Available for any occasion**

**We Deliver!**



**FOOTBALL PIZZA SPECIAL**

1 Large cheese pizza  
1 Large order of wings  
1 Large order of garlic knots &  
1 Large bottle of soda \$24.99+ tax  
Available Sunday-Monday-Thursday only



**Now Accepting Reservations for Holiday parties!**  
**Catering & Catering Trays Available**

**Hours: Sun.-Thurs. 11am-10pm, Fri. & Sat. 11am-11pm**

**Sides for Holiday Entertaining**

(Family Features) The holiday season means it's time for gathering family and friends for food and celebration. To make the process easier, incorporate recipes that can feed a crowd without lots of exotic, hard-to-find ingredients or long, laborious prep and cook times.



These recipes for Hearty Roasted Winter Vegetables featuring Aunt Nellie's Whole Pickled Beets and Caprese Bean and Salami Salad with READ 3 Bean Salad, for example, are ideal side dishes for holiday gatherings with enough to go 'round for everyone at the table. Plus, if you're heading to a holiday potluck, they're perfect for bringing along to share with the whole crew and versatile enough to be paired with a variety of main courses. Plus, the Caprese Bean and Salami Salad can also stand in as an appetizer.

Find more holiday recipes at [auntnellies.com](http://auntnellies.com) and [READsalads.com](http://READsalads.com).

**Hearty Roasted Winter Vegetables**

Prep time: 10 minutes      Cook time: 45-55 minutes  
Servings: 6

- 1 jar (16 ounces) Aunt Nellie's Whole Pickled Beets, drained
- 1 small red onion, cut into 12 wedges
- 2 cups baby portobello mushrooms, cleaned and stems trimmed



**Deitz & Watson Lunchmeat & Cheeses**

**CR MEAT INC.**

FRESH MEATS FROM OUR TABLE TO YOURS



We carry Jake & Amos from Lancaster

Our own:  
Sausage  
Bacon Balls  
Ring Bologna  
Pepperoni  
Turkey Jerky  
Beef Sticks  
Liver Pudding  
Souse  
Pickled Tripe  
Beef Tongue

Now taking orders for  
Smoked and Fresh Hams for Christmas  
and Pork Loin & Pork Roast for the New Year

**Now Available**  
**Pigs Stomach cleaned or we can stuff for your holiday meals**  
**Call to place your order**



Homemade Chicken & Beef Pot Pie, Macaroni & Cheese Casserole, Pierogi Casserole, Stuffed Peppers and Stuffed Cabbage. Just Heat & Eat!

Smoking done on premises

244 E. Moorestown Rd., Wind Gap, PA 484-226-5330

Hours: Sunday & Monday 8am-2pm, Tuesday - Saturday 8am-5pm

*Mt. Bethel Diner*

Open Daily 6am-10pm



Breakfast  
Lunch  
Dinner

2600 N. Delaware Dr.  
Mt. Bethel, PA.  
(570) 897-6409

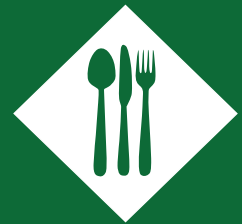


Open November 26 & 27  
Various Baked Goods  
Available on November 27  
Happy Thanksgiving  
Closed Nov. 28-30  
Re-Opening  
Tuesday, December 3rd  
Dinners start Dec. 3rd 4-7pm

**Catering Available**

Hours: Tues.-Fri. 11:00am-7:00pm  
Sat. 9:00am-3:00pm, Sun. & Mon. Closed

There are many  
restaurants, diners  
and cafe's  
in our communities.  
Support local  
business and your  
community by  
dining locally.



- 2 cups butternut squash, peeled, seeded and cut into 3/4-inch chunks
  - 3 tablespoons olive oil
  - 1 clove garlic, finely chopped
  - 2 teaspoons chopped fresh rosemary
  - 2 teaspoons chopped fresh thyme
  - 1/4 teaspoon salt, plus additional, to taste (optional)
  - 1/8 teaspoon pepper, plus additional, to taste (optional)
  - 2 cups Brussels sprouts, ends trimmed and scored with cross-cut
- Heat oven to 400 F. Place beets, onion, mushrooms and squash on rimmed 15 1/2-by-10 1/2-by-1-inch baking sheet; drizzle with olive oil. Add garlic, rosemary, thyme, 1/4 teaspoon salt and 1/8 teaspoon pepper; toss to coat. Roast 15 minutes.
- Add Brussels sprouts, stir and continue to roast until vegetables are tender and browned, about 30-35 minutes, stirring once. Adjust salt and pepper, to taste, if desired.

Source: Seneca Foods



**SLATE BELT SENIOR CENTER**

Blue Valley Farm Show Complex, Bangor, PA.

Phone 610-588-1224 Hours: 8:00am-3:30pm

For Meal Reservations call by 10:00am one day prior to lunch. Cancellations must be done as soon as possible. Lunch is served at 11:30am.

Darts, Tuesdays, 10:00am

Quoits, Tuesdays, 9:00-10:00am

Tai Chi, Tuesdays, 12:15pm

Painting, Wednesdays, 8:00-11:00am

Exercise with Darla, Wednesdays, 10:00-11:00am

Poker, Thursdays, 9:00am

**DECEMBER EVENTS**

Discussion: "All I want for Christmas"-Monday, Dec. 2nd, 10:00am

Deck the Halls, Tuesday, December 3rd, 9:00am

Medicare Info. with Roselle, Friday, December 6th, 9:00am

Bean Bag Tournament, Friday, December 6th, 10:00am

(registration required) Prizes awarded

Trivia Game, Friday, December 6th, 12:15pm

Cookie making for sing along, Monday December 9th, 10:00am

Christmas Carols, Hot Chocolate, Thursday, Dec. 12th, 12:15pm

Baseball, Friday, December 13th, 10:00am

Discussion group, "What makes you Happy?", Friday, December 13th, 12:15pm

Discussion group, "How do you see yourself in the New Year, Monday, December 16th, 10:00am

Memory Cafe', Tuesday, December 17th, 2:00-3:30pm

Christmas Karaoke, Monday, December 23rd, 12:15pm

Deja' the Therapy Dog, Tuesday, December 24th, 10:00am

**Center will close AT 12:30 pm, Tuesday, December 24th****CENTER CLOSED--HAVE A VERY MERRY CHRISTMAS!**

Council Meeting, Thursday, December 26th, 9:00am

Events Meeting, Thursday, December 26th, 1:00pm

Mexican Trains, Thursday, December 26th, 12:15pm

Miss Julies Dance School, Friday, December 27th, 10:30-11:00am

Create an action plan for the new year, Friday, Dec. 27th, 12:15pm

**Center will close at 12:30, Monday and Tuesday, December 30th & 31st****DEADLINE NEARS FOR PROPERTY TAX/RENT REBATE PROGRAM**

Older adults and Pennsylvanians with disabilities have until Dec. 31 to apply for the state's 2018 Property Tax/Rent Rebate program. Remember, assistance through my offices is always free. You need not pay a private firm for assistance. The rebate program benefits eligible Pennsylvanians age 65 and older; widows and widowers age 50 and older; and people with disabilities age 18 and older. The income limit is \$35,000 a year for homeowners and \$15,000 annually for renters, and half of Social Security income is excluded. For additional information and applications, click here, or contact my office(s) for assistance.

**AARP PALMER TOWNSHIP AREA CHAPTER 2144 TO MEET**

The AARP Palmer Township Area Chapter 2144 will meet on **Monday, December 2nd at 1:00 pm** at the Wilson Boro Community Center 2200 Liberty Street, Easton, PA. Speaker will be Donna Thorman, National Alliance on Mental Health Sign up for the Christmas Party on December 12th. Come early, bring your lunch and socialize.

**GIVE THANKS EVERYDAY****Leck Veterinary 610-863-3111****SLATE BELT AARP CHAPTER 4135**

Slate Belt AARP Chapter 4135 will hold their annual Christmas Party on **December 9th at 12:00pm at Sal's Pizza, in Wind Gap**. Everyone is welcome to attend. Please contact Deanna at 610-588-4623 for more info and for reservation count. **January meeting will be on the 13th at 1pm at the Senior Center on American Bangor Rd.** If Center is closed due to inclement weather, meeting is also cancelled.

**BINGO****NOVEMBER 28 & DECEMBER 5**

Polk Township Volunteer Fire Company

Main Fire House Hall,

115 Interchange Rd, Kresgeville

Doors open at 5:00 PM • Bingo starts at 6:45 PM

**NOVEMBER 29 & DECEMBER 6**

Wind Gap Fire Company

Doors open at 5:00 PM • Bingo starts 6:45 PM

**NOVEMBER 30 & DECEMBER 7**

Immaculate Conception

Doors open at 11:00am • Bingo starts at 1:00 PM

**DECEMBER 2 & DECEMBER 9**

Kunkletown Fire Co.

Progressive Jackpot . 7:00pm

**DECEMBER 3 & DECEMBER 10**

Portland Hook &amp; Ladder Co. #1

State Street, Portland 7:00 PM

Klecknersville Rangers Vol. Fire Co.

2718 Mountain View Drive, Moore Township  
Doors open at 5:00 PM • Bingo starts at 7:00 PM**DECEMBER 4 & DECEMBER 11**

Bushkill Vol Fire Company

Doors open at 5:00 PM • Bingo starts at 7:00 PM

*Happy Thanksgiving*



# HELP WANTED

**Help Wanted: Full Time Experienced Mechanic**  
Apply in person. Horn's Outdoor Center Inc., 1169 Mt. Bethel Hwy., Mt Bethel, PA. 18343

**Help Wanted -Experienced Waitress** Full for Part Time  
Must be available nights and weekends. Apply in person Mt Bethel Diner 2600 N. Delaware Drive, Mt Bethel, PA.

## CLASSIFIED ADS

**REAL ESTATE-PROPERTY RENTALS & SALES, HELP WANTED, SERVICES, MISCELLANEOUS FOR SALE ITEMS, AUTOS, CARS, TRUCKS, SUV'S, RV'S, MOTORCYCLES**



Classified line ad rates up to 20 words \$10 per issue each or \$15 for 2 issues. There will be an additional charge of 25 cents per word over 20 words

NAME \_\_\_\_\_  
ADDRESS \_\_\_\_\_  
CITY/STATE/ZIP \_\_\_\_\_  
PHONE \_\_\_\_\_

## LINE CLASSIFIEDS

1 ISSUE: \$10 \_\_\_\_\_ 2 ISSUES: \$18 \_\_\_\_\_

### CLASSIFIED DISPLAY

1 ISSUE: \_\_\_\_\_ 2 ISSUES: \_\_\_\_\_

1 Column X 1.25" \$15 per insertion or \$25 for 2 issues or

1 Column X 1.75" \$20 per insertion or \$30 for 2 issues

Mailed or emails classified ads will only be accepted. No Classified ads will be accepted by phone. Deadline 4:00PM on Friday, prior to publication week. By mail send this form along with your check made payable to: The Belt and Beyond, P.O. Box 33, Bangor, PA 18013 ATTN: Classifieds. ByEmail send Classified as with Classified in the subject to thebeltandbeyond@gmail.com. All Classified ads must be pre-paid. No exceptions. *No Refunds or Credits.*

## Business Card Directory

**LANE'S**  
**Floor & Upholstery**  
**Cleaning**

Residential and Commercial  
610-588-2113

*Tighe & Megan Lane, Owners*  
Bangor, Pa

**kw** Nate Powell  
Realtor  
Cell: 610-657-4678

**Keller Williams**  
Each office is independently owned and operated

2901 Emrick Blvd. Suite 100  
Bethlehem, PA 18020

refernatepowell@gmail.com  
Office: 610-867-8888  
Fax: 610-867-8889

**Law Offices of**  
**Jeremy Michael Bolles**  
*Bankruptcy Lawyer*

An experienced bankruptcy attorney, that can help get you the debt relief you deserve.

**Call to Schedule your free consultation**

Law offices in Bangor and Stroudsburg  
**484-293-1220**

We are a debt relief agency. We help people file for bankruptcy relief under the Bankruptcy Code.

**INSTANT REPLAY**  
**Sporting Goods**

(610) 863-4600  
31 W. 1st St  
Wind Gap, PA

**EQUIPMENT  
UNIFORMS  
SCREENPRINTING  
EMBROIDERY**

**This  
Could  
Be  
Your  
Ad Here**

**HEARD'S  
MEAT MARKET**

Fresh & Smoked Meats

501 S. Main Street  
Bangor, PA  
Phone: 610-588-1195  
Fax: 610-588-7581

**LITTLE CREEK  
BAR-B-CUE**

Check out our Facebook page for Weekly Specials!

1004 Washington Blvd.  
Bangor, Pa 18013  
**610-588-3831**

[www.littlecreekbarbucueco.com](http://www.littlecreekbarbucueco.com)

**This  
Could  
Be  
Your  
Ad Here**

For more information on advertising your business in the Business Card Directory, Contact us at: 610-704-6818 or email us at: thebeltandbeyond@gmail.com



**We love to hear from you!**

News · Photos · Events

610-704-6818

thebeltandbeyond@gmail.com www.thebeltandbeyond.com

LIKE us on Facebook to stay up to date!



# SHOP LOCAL

Shop the Slate Belt this holiday season



PAID FOR IN PART BY THE NORTHAMPTON COUNTY HOTEL TAX GRANT PROGRAM



SLATE BELT  
PENNSYLVANIA

SLATEBELTRISING.ORG

SLATEBELTCHAMBER.ORG

**MT. BETHEL VOLUNTEER FIRE COMPANY INC.**

## GUN SHOW

**SUNDAY, DECEMBER 8, 2019 • 9 AM TO 3 PM**

2341 N. DELAWARE DRIVE, MT. BETHEL, PA

Approx. 8 miles South from Delaware Water Gap Exit off I-80 East

### BUY - SELL - TRADE COLLECTORS & DEALERS

New & Used - Modern & Antique Firearms, Hunting, Fishing, Archery & Camping Items  
Plus Reloading items

Admission \$5.00 for Adults

Children under 12 FREE

when accompanied by an adult

**FUTURE SHOW DATE: SUNDAY, APRIL 19, 2020**

150 TABLES FOR RENT • BREAKFAST AND LUNCH AVAILABLE



**ALL PROCEEDS FROM THIS FUNDRAISER BENEFITS OUR TRUCK AND EQUIPMENT FUND**

**MT. BETHEL FIRE COMPANY 570-897-6767 WWW.MOUNTBETHELFIRE.COM**

**FOR MORE INFORMATION CONTACT: JASON MILLER**

at 484-429-0072 or email Mbfcrecue37@ptd.net